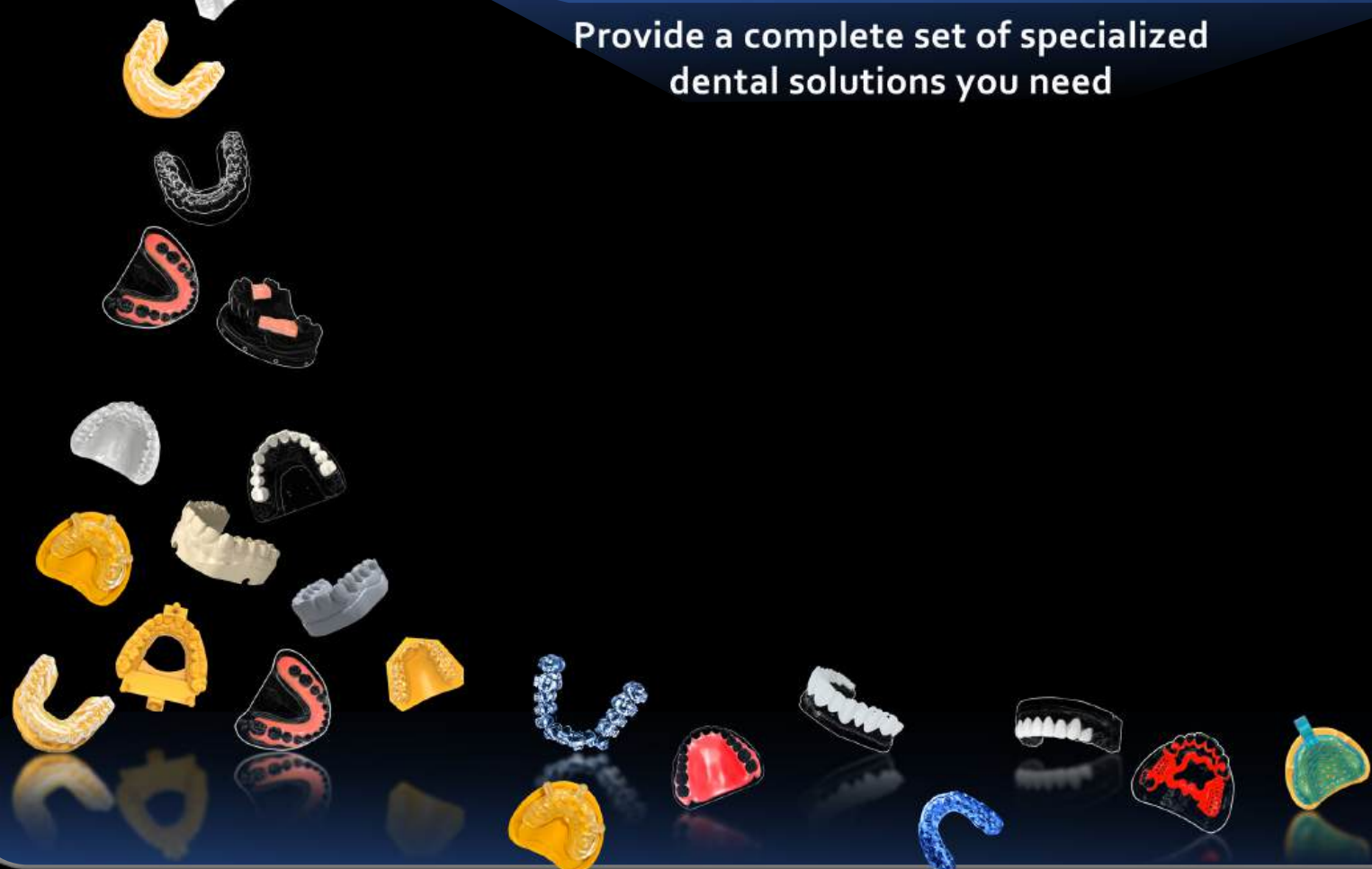




DENTAL 3D PRINTING RESIN

Provide a complete set of specialized dental solutions you need



TEMPORARY C&B RESIN **REPAIR MODEL RESIN** **NIGHT GUARD PAD RESIN** **CLEAR ALIGNER RESIN** **WATER WASHABLE MODEL RESIN**
TRAY RESIN **SURGICAL GUIDE RESIN** **OPPOSITE JAW MODEL RESIN** **FLEXIBLE BASE RESIN** **IBT RESIN** **WAX CASTING RESIN**
TRY-IN RESIN **FULL MOUTH MOVABLE BASE RESIN** **BIOMIMETIC GUM RESIN** **PLANTING MODEL RESIN**
TEMPORARY VENEER RESIN **SMILE VENEER RESIN** **ORTHODONTIC MODEL RESIN** **PERMANENT CROWN RESIN**

Zhongchuang Medical Group Co., Ltd
<https://www.chinadental3dprintingresin.com>

compatible with



ASIGA



rapidshape



ELEGOO



ANYCUBIC



RAYSHAPE



and the other open system printers

Founded in 2019, Zhongchuang Resin is a high-tech enterprise specializing in the R&D, production, and sales of premium dental resins. Leveraging cutting-edge material technology and a global presence, we provide high-performance, safe, and reliable resin products to dental clinics, labs, and medical device suppliers.

Our business spans 60+ countries and regions across Europe, North America, Asia, South America, and beyond, establishing us as a trusted core materials partner in the global dental restoration industry.

5000+

Cooperative Labs & Clinics

2019

Establishment

95%

Customer Rentention Rate



R&D & PRODUCTION

PRINTED RESIN SYSTEMS(PRS).A complete set of solutions built around light-curing resin.Going beyond the role of a single equipment or material supplier, we integrate top 'PRS' to provide customers with end-to-end digital manufacturing solutions, making innovation simpler and precision.



SALES NETWORK

Serving 5,000+ dental clinics and distributors worldwide. We offer standardized products and customized solutions with flexible packaging options, maintaining an 95%+ customer rentention rate.



GLOBAL TRADE

Building strong partnerships with local distributors in 30+ markets to ensure product availability and regulatory compliance.



AFTER-SALES SERVICES

24/7 multilingual technical support with clinical case database and operation guides.

Catalogue



PRS-R-01 PERMANENT CROWN

01



PRS-R-02 TEMPORARY C&B

02



PRS-R-03 TRY-IN

03



PRS-R-04 FLEXIBLE BASE

04



PRS-R-05 FULL MOUTH MOVABLE BASE

05



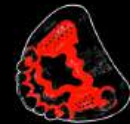
PRS-R-06 TEMPORARY VENEER

06



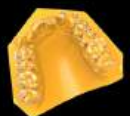
PRS-R-07 SMILE VENEER

07



PRS-R-08 WAX CASTING

08



PRS-R-09 IBT

09





PRR-R-10 TRAY

10



PRR-R-11 SURGICAL GUIDE

11



PRR-R-12 BIOMIMETIC GUM

12



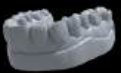
PRR-R-13 NIGHT GUARD PAD

13



PRR-R-14 CLEAR ALIGNER

14



PRR-R-15 WATER WASHABLE MODEL

15



PRR-R-16 OPPOSITE JAW MODEL

16



PRR-R-17 ORTHODONTIC MODEL

17



PRR-R-18 PLANTING MODEL

18



PERMANENT CROWN

No.: PRS-R-01



PRODUCT FEATURES

- Porcelain Powder Reinforced Formula
- High-Precision Detail Restoration
- Multi-Layer Aesthetic Effect
- Strong Fracture Resistance

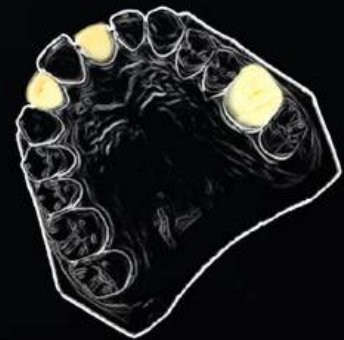


Used for fabricating single crowns and inlays, with high strength, wear resistance, and natural aesthetics, replacing traditional metal-porcelain restorations.

Specification 1:
0.25kg/bottle (contains 60% ceramic powder)

Color: BL, A1, A2, A3, A3.5, B1, C1

Specification 2:
0.5kg, 1kg/bottle (contains 10% ceramic powder)



PRODUCT PERFORMANCE

Parameter	Standard	Unit	Result
Shore	ASTM D2240	Shore D	90-96
Bending strength	ASTM D790	Mpa	180-208
Bending modulus (Specification 2)	ASTM D790	Mpa	4300-4700
Bending modulus (Specification 1)	ASTM D790	Mpa	7000-8800
Density (Specification 1)	/	g/cm ³	1.6-1.7
Notch impact strength	ASTM D256	Mpa	18-28
Breaking elongation rate	ASTM D638	%	4-6.5
Water absorption rate	ASTM D570	%	0.35-0.42
Tensile strength	ASTM D256	Mpa	85-90

TEMPORARY C&B

No.: PRS-R-02

PRODUCT FEATURES

- High-Strength Temporary Support
- Natural Light-Transmitting Aesthetics
- Strong Stability



Transparent Glaze

Used for temporary crown/bridge restoration after root canal treatment or tooth preparation to protect abutment teeth and maintain chewing function until permanent restorations are completed.



- Color: BL, A1, A2, A3, A3.5, B1, C1
- Specification: 1kg/bottle

PRODUCT PERFORMANCE

Parameter	Standard	Unit	Result
Shore	ASTM D2240	Shore D	86-90
Bending strength	ASTM D790	Mpa	148
Bending modulus	ASTM D790	Mpa	3200-3600
Notch impact strength	ASTM D256	Mpa	20-40
Breaking elongation rate	ASTM D638	%	8-11
Water absorption rate	ASTM D570	%	0.6-0.95
Tensile strength	ASTM D790	Mpa	80-95

TRY-IN

No.: PRS-R-03



PRODUCT FEATURES

Efficient Trial Fitting

Convenient On-Site Adjustment



Producing disposable trial dental bridges, allowing patients to preview restoration outcomes and assisting dentists in optimizing occlusion.

Color: A2

Specification: 1kg/bottle



PRODUCT PERFORMANCE

Parameter	Standard	Unit	Result
Shore	ASTM D2240	Shore D	78
Bending strength	ASTM D790	Mpa	101-115
Bending modulus	ASTM D790	Mpa	2450-2650
Notch impact strength	ASTM D256	Mpa	30.5-38.5
Breaking elongation rate	ASTM D638	%	5.5-6.5
Water absorption rate	ASTM D570	%	0.12-0.19
Hot deformation temperature	/	°C	<65

FLEXIBLE BASE

No.: PRS-R-04

PRODUCT FEATURES

Superior Elasticity

Gum-Friendly

Low Hardness

Super-Elastic Clasp



Transparent Glaze (soft)

Specifically designed for patients with sensitive gums or compromised alveolar bone, our flexible base evenly distributes forces to minimize discomfort.



Color: Pink

Specification: 0.5kg, 1kg/bottle

PRODUCT PERFORMANCE

Parameter	Standard	Unit	Result
Shore	ASTM D2240	Shore D	69-73
Bending strength	ASTM D790	Mpa	35-45
Bending modulus	ASTM D790	Mpa	600-790
Tensile strength	ASTM D256	Mpa	30-35
Breaking elongation rate	ASTM D638	%	75-95
Water absorption rate	ASTM D570	%	0.4-0.52

FULL MOUTH MOVABLE BASE

No.: PRS-R-05



PRODUCT FEATURES

- High Strength
- Long-Lasting Performance
- Precise Force Distribution



Premium complete denture bases for a perfect fit-delivering stability, restored function, and a natural look for confident smiles.

- Color: Pink
- Specification: 1kg/bottle



PRODUCT PERFORMANCE

Parameter	Standard	Unit	Result
Shore	ASTM D2240	Shore D	86
Bending strength	ASTM D790	Mpa	142
Bending modulus	ASTM D790	Mpa	2650-2850
Notch impact strength	ASTM D256	Mpa	40.5-58.5
Breaking elongation rate	ASTM D638	%	7.5-9.0
Water absorption rate	ASTM D570	%	0.6-0.82
Hot deformation temperature	/	°C	<70

TEMPORARY VENEER

No.: PRS-R-06

PRODUCT FEATURES

Ultra-Thin Design

High-Transparency Bright White

Efficient Molding



Used to make short-term trial or transitional veneers for patients to experience the restorative effects, assist dentists in adjusting aesthetic plans, or provide temporary protection for tooth whitening.



Color: BL

Specification: 1kg/bottle

PRODUCT PERFORMANCE

Parameter	Standard	Unit	Result
Shore	ASTM D2240	Shore D	92
Bending strength	ASTM D790	Mpa	168-188
Bending modulus	ASTM D790	Mpa	4800
Notch impact strength	ASTM D256	Mpa	39-55
Breaking elongation rate	ASTM D638	%	7.5-8.5
Water absorption rate	ASTM D570	%	0.5-0.75
Hot deformation temperature	/	°C	<70

SMILE VENEER

No.: PRS-R-07



PRODUCT FEATURES

- Adjustable Comfortable Fit
- Long-Lasting Stain Resistance
- Natural Light-Transmitting Texture
- Temperature-Sensitive Deformation, Portable



Transparent Glaze (soft)

Directly print removable whitening veneers to quickly improve tooth color and shape without tooth grinding, suitable for daily beauty.

Color: BL

Specification: 1kg/bottle



PRODUCT PERFORMANCE

Parameter	Standard	Unit	Result
Shore	ASTM D2240	Shore D	58
Bending strength	ASTM D790	Mpa	35-42
Bending modulus	ASTM D790	Mpa	850-950
Tensile strength	ASTM D256	Mpa	25.5
Breaking elongation rate	ASTM D638	%	92
Water absorption rate	ASTM D570	%	0.45-0.58
Hot deformation temperature	/	°C	<60

WAX CASTING

No.: PRS-R-08

PRODUCT FEATURES

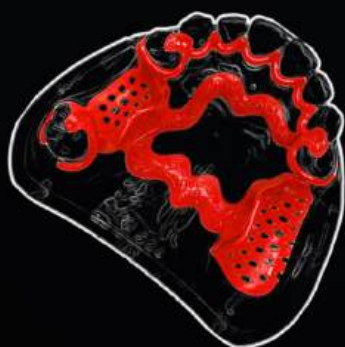
No Residue, Easy Casting

Extreme Detail Restoration

Rapid Demolding, Time-Saving



Used for printing wax patterns in metal framework/porcelain-fused-to-metal crown casting and ceramic casting, replacing traditional manual wax carving to improve efficiency.



Color: Red

Specification: 1kg/bottle

PRODUCT PERFORMANCE

Parameter	Standard	Unit	Result
Sintering temperature	/	°C	800-900
Bending strength	ASTM D790	Mpa	70-78
Storage time of finished products	/	H	<6
annealing temperature	/	/	1-1.5
Residual rate	/	%	<0.15



PRODUCT FEATURES

Segmented Printing For High Adaptability

Precision Molding

Transparent, Invisible, And Easy To Clean



Used for fabricating fixed orthodontic brackets and accessories to assist in invisible aligner/traditional bracket orthodontics and accurately transmit orthodontic forces.

Color: Transparent

Specification: 1kg/bottle



PRODUCT PERFORMANCE

Parameter	Standard	Unit	Result
Shore	ASTM D2240	Shore D	75
Bending strength	ASTM D790	Mpa	65-78
Bending modulus	ASTM D790	Mpa	1760-1950
Notch impact strength	ASTM D256	Mpa	23.5-28.5
Breaking elongation rate	ASTM D638	%	6.5-9.5
Water absorption rate	ASTM D570	%	0.65-0.89
Hot deformation temperature	/	°C	<75

TRAY

No.: PRS-R-10

PRODUCT FEATURES

- High Strength And Toughness
- Strong Material Compatibility
- Precise Positioning And Efficient Operation



Used for fabricating customized trays such as orthodontic trays and impression trays to meet the needs of precise impression taking and positioning in oral treatments.



Color: Green

Specification: 1kg/bottle

PRODUCT PERFORMANCE

Parameter	Standard	Unit	Result
Shore	ASTM D2240	Shore D	86
Bending strength	ASTM D790	Mpa	98-105
Bending modulus	ASTM D790	Mpa	2250-2750
Notch impact strength	ASTM D256	Mpa	28.5-35.5
Breaking elongation rate	ASTM D638	%	5.5-6.5
Water absorption rate	ASTM D570	%	0.13-0.19
Hot deformation temperature	/	°C	<60

SURGICAL GUIDE

No.: PRS-R-11



PRODUCT FEATURES

High Construction Precision

High Toughness And Anti-Fracture

Transparent, Visible, And High Precision



Used for printing dental implant/orthodontic surgical guides to precisely position surgical pathways and assist dentists in performing complex surgical procedures.

Color: Transparent

Specification: 1kg/bottle



PRODUCT PERFORMANCE

Parameter	Standard	Unit	Result
Shore	ASTM D2240	Shore D	82
Bending strength	ASTM D790	Mpa	75-85
Bending modulus	ASTM D790	Mpa	1880-2050
Notch impact strength	ASTM D256	Mpa	25.5-35.5
Breaking elongation rate	ASTM D638	%	6.5-8.5
Water absorption rate	ASTM D570	%	0.5-0.85
Hot deformation temperature	/	°C	<75

BIOMIMETIC GUM

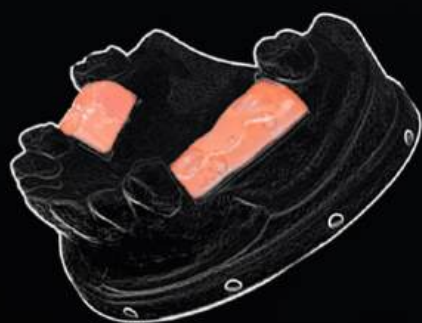
No.: PRS-R-12

PRODUCT FEATURES

- High Elasticity and Tear Resistance
- Excellent Dynamic Fit Performance
- Natural Gingiva Aesthetics



Used for fabricating simulated gingiva, applied in dental implant surgery simulation and denture aesthetic design to restore the shape and elasticity of natural gingiva.



Color: Pink

Specification: 1kg/bottle

PRODUCT PERFORMANCE

Parameter	Standard	Unit	Result
Shore	ASTM D2240	Shore D	35-38
Bending strength	ASTM D790	Mpa	2.5-5.0
Bending modulus	ASTM D790	Mpa	1250-1750
Notch impact strength	ASTM D256	Mpa	0.8-1.0
Breaking elongation rate	ASTM D638	%	200-320
Water absorption rate	ASTM D570	%	0.13-0.19

NIGHT GUARD PAD

No.: PRS-R-13



PRODUCT FEATURES

Heat-Activated Shaping

Effortless Wearing

Anti-Fracture Toughness

Corrosion-Resistant And Easy To Maintain



Transparent Glaze (soft)

Used to fabricate nighttime bruxism guards and occlusal splints to cushion the impact of grinding, protecting teeth.

Color: Transparent blue

Specification: 1kg/bottle



PRODUCT PERFORMANCE

Parameter	Standard	Unit	Result
Shore	ASTM D2240	Shore D	70-75
Bending strength	ASTM D790	Mpa	35.5-48
Bending modulus	ASTM D790	Mpa	1280-1490
Notch impact strength	ASTM D256	Mpa	45.5-48.5
Breaking elongation rate	ASTM D638	%	60-80
Water absorption rate	ASTM D570	%	0.40-0.65

CLEAR ALIGNER

No.: PRS-R-14

PRODUCT FEATURES

- Portable Printing Process
- Aesthetics With Effective Correction
- Precise Mechanical Force Transmission



Transparent Glaze (soft)

Directly print invisible aligners to achieve tooth movement through gradual force application, meeting the aesthetic needs of adult orthodontics.



- Color: Transparent
- Specification: 1kg/bottle

PRODUCT PERFORMANCE

Parameter	Standard	Unit	Result
Shore	ASTM D2240	Shore D	72-75
Bending strength	ASTM D790	Mpa	35-45
Bending modulus	ASTM D790	Mpa	600-800
Notch impact strength	ASTM D256	Mpa	25-35
Breaking elongation rate	ASTM D638	%	80-100
Water absorption rate	ASTM D570	%	0.5-0.7

WATER-WASHABLE MODEL

No.: PRS-R-15



PRODUCT FEATURES

- Direct Tap Water Cleaning
- Eco-Friendly Process
- Low-Cost & High Efficiency
- Multi-Scenario Application



For printing basic dental models, suitable for entry-level scenarios such as simple models.

Color: Gray

Specification: 1kg/bottle



PRODUCT PERFORMANCE

Parameter	Standard	Unit	Result
Shore	ASTM D2240	Shore D	85.7
Bending strength	ASTM D638	Mpa	53
Bending modulus	ASTM D638	Mpa	1498
Tensile modulus	ASTM D638	Mpa	1355
Breaking elongation rate	ASTM D638	%	11.8
Water absorption rate	ASTM D570	%	0.82-0.95

OPPOSITE JAW MODEL

No.: PRS-R-16

PRODUCT FEATURES

Boil-Resistant & Crack-Free

Stable After Boiling

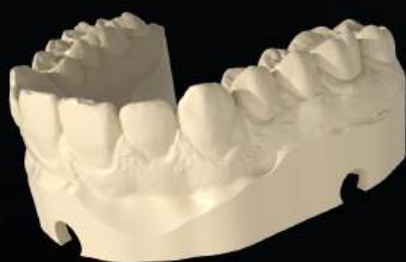
No Release Agent Required



For printing opposing dental models, used in basic diagnostic scenarios such as occlusal relationship analysis and denture arrangement.

Color: Beige

Specification: 1kg/bottle



PRODUCT PERFORMANCE

Parameter	Standard	Unit	Result
Shore	ASTM D2240	Shore D	72
Bending strength	ASTM D790	Mpa	75-85
Bending modulus	ASTM D790	Mpa	1950-2115
Notch impact strength	ASTM D256	Mpa	38-40.5
Breaking elongation rate	ASTM D638	%	7-10.2
Water absorption rate	ASTM D570	%	0.8-0.98
Hot deformation temperature	/	°C	<73

ORTHODONTIC MODEL

No.: PRS-R-17



PRODUCT FEATURES

High-Temperature Resistance
For Thermoforming

Strong Film Compatibility

Ultra-Low Viscosity & High Fluidity



For printing orthodontic correction models, supporting orthodontic processes such as in visible aligner thermoforming and bracket positioning.

Color: White

Specification: 1kg/bottle



PRODUCT PERFORMANCE

Parameter	Standard	Unit	Result
Shore	ASTM D2240	Shore D	85
Bending strength	ASTM D790	Mpa	80-89
Bending modulus	ASTM D790	Mpa	1650-1850
Notch impact strength	ASTM D256	Mpa	15-20.5
Breaking elongation rate	ASTM D638	%	9-11.2
Water absorption rate	ASTM D570	%	1.0-1.18
Hot deformation temperature	/	°C	<110

PLANTING MODEL

No.: PRS-R-18

PRODUCT FEATURES

- High-Precision Detail Replication
- Excellent Stability
- Strong Impact Resistance
- Compatible With Sectioned Die Models



For printing high-precision dental implant surgical models, used for modeling complex anatomical structures.



Color: Yellow, Gray

Specification: 1kg/bottle

PRODUCT PERFORMANCE

Parameter	Standard	Unit	Result
Shore	ASTM D2240	Shore D	80
Bending strength	ASTM D790	Mpa	80-90
Bending modulus	ASTM D790	Mpa	2050-2315
Notch impact strength	ASTM D256	Mpa	36-41.5
Breaking elongation rate	ASTM D638	%	7-10
Water absorption rate	ASTM D570	%	0.68-0.92
Hot deformation temperature	/	°C	<80

INNOVATIVE RESINS

PERFECT SMILES



chongxiangli155@gmail.com

<https://www.chinadental3dprintingresin.com>

B10,RM 2703 NEWTREND CENTRE,704PRINCEEDWARD ROAD
EAST,SAN POKONG, KLN,HK

Room 204, Administration Building, Jia Tai Pharmaceutical, No.1 Industrial Zone,
Tangwei Community, Fuhai Street, Bao'an District, Shenzhen City



Wechat



WhatsAPP

